



the Poppy Print

Quarterly Newsletter of the Theodore Payne Foundation

Spring Events at TPF

W

ho says we don't have seasons? At TPF, we celebrate them all – with Spring marked by three signature events: Poppy Day Plant Sale, the Theodore Payne Native Plant Garden Tour, and the Native Plant Symposium, Wildflower Show & Plant and Book Sale!

11TH ANNUAL THEODORE PAYNE NATIVE PLANT GARDEN TOUR

Saturday & Sunday, April 5 & 6, 10:00 a.m.-5:00 p.m.

For more than a decade, the Theodore Payne Native Plant Garden Tour has provided Southern California homeowners and gardeners with the opportunity to visit authentic California gardens that showcase the beauty of native plants. This year's two-day event features 42 unique gardens in the Los Angeles area, including 18 that are new to the tour – with contemporary art installations at 11 locations.

Saturday, April 5, features gardens in Los Angeles, the Westside and South Bay. Sunday, April 6, showcases gardens in the San Fernando and San Gabriel valleys.

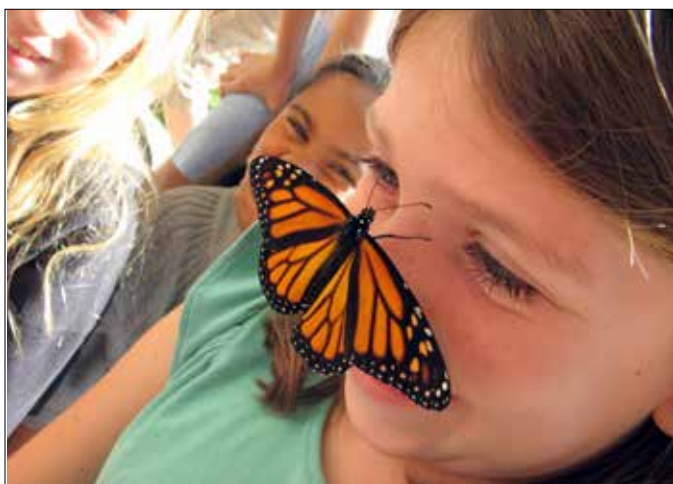
In addition to being beautiful, the gardens on our tour help save money and conserve resources through reduced water consumption and lower maintenance. The gardens also support native bird and insect populations. These landscapes are creative, sustainable and reflect a character that is distinctly Californian.

A wide range of styles, budgets, site challenges and sizes are represented. You'll see examples of container gardens, native grass lawns and a no-mowing-required yard meadow, as well as rainwater harvesting and catchment designs. See details, photos and plant lists for all 42 gardens at nativeplantgardentour.org.

Garden owners – many of whom designed and installed their own landscapes – will be on site to share the secrets of their success. Professionally designed gardens are also on tour, as well as several public landscapes. Theodore Payne Foundation docents will be available for questions.

continues on p.2

Photo © Conley Day



POPPY DAY PLANT SALE – One Day Only!

Saturday, March 29, 8:30 a.m.-4:30 p.m.

The region's best selection of California native plants – more than 600 unique species and cultivars – will be available on Poppy Day with discounts to all!

TPF members receive 15% off plants; non-members 10% off plants – and everyone receives 10% off seed purchases.

This year's spring sale has a special emphasis: butterfly plants, especially those that attract and support Monarchs.

Cultivating California natives provides critical food for caterpillars and adult butterflies, including Monarchs. Monarch butterflies will only lay their eggs on milkweed (*Asclepias* spp.), California Monarchs need native milkweeds, and we'll have many species of native *Asclepias* for sale on Poppy Day.

On Poppy Day, you can visit the Foundation's butterfly garden, pick up lists of butterfly-friendly plants, and view an informative butterfly exhibit!

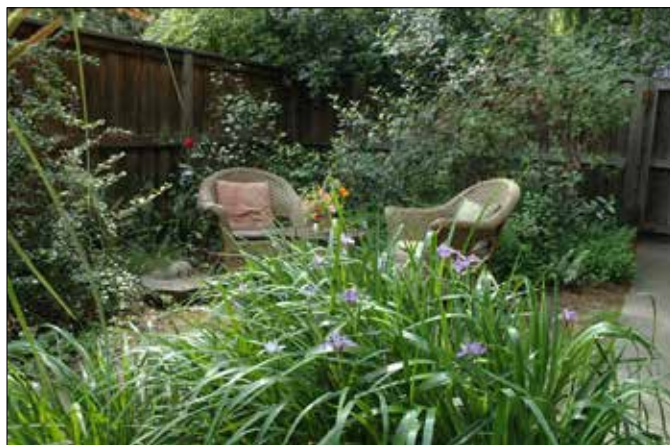


Photo © Barbara Eisenstein

Garden #32, Eisenstein, South Pasadena

continued from p. 1

Tour Tickets

TPF members, students and groups of 10 or more, \$15/person for both days; non-members, \$20/person. Children are welcome, with adult supervision.

Purchase tickets online at theodorepayne.org, by phone to 818-768-1802, or in person at our Sun Valley headquarters. Ticket buyers will receive tickets and printed tour guides with garden addresses, map and garden features.

New to This Year's Tour! *Inspired: L.A. Artists Respond to California Native Gardens* – installations by Los Angeles-based contemporary artists at 11 locations.

The unique history, culture and natural beauty of Southern California have drawn many creative people to the region. Using diverse concepts and media, the artists in this exclusive outdoor exhibition explore challenging issues of art, culture and our ever-evolving relationship with nature.

The participating artists are Ann Hadlock, Blue McRight, Christine Nguyen, Devon Tsuno, Fred Rose, Jacqueline Suskin, Lauren Kasmer, Michael Lewis Miller, Nancy Kyes, Pamela Burgess and Pat Warner. Many will be on site to discuss their work. Art will also be for sale, with 15% of the proceeds benefiting the Theodore Payne Foundation. Learn more about the show and artists at nativeplantgardentour.org.

The Foundation thanks all of its tour sponsors – including the G2 Gallery in Venice, Los Angeles Department of Water and Power, and Upper San Gabriel Valley Municipal Water District – for their invaluable support of the 11th Annual Theodore Payne Native Plant Garden Tour.

Proceeds from the garden tour benefit the Foundation's non-profit native plant nursery and education programs – California treasures since 1960.



Organic natural wood sculptures by Fred Rose, one of 11 artists featured on our 2014 garden tour.



Photo © Robert Waters & Catherine Pannell

Garden #21, Waters/Pannell, Downey

NATIVE PLANT WEEK SYMPOSIUM, WILDFLOWER SHOW & PLANT AND BOOK SALE

Saturday, April 19, 9:00 a.m.-4:00 p.m.

At Sepulveda Garden Center, 16633 Magnolia Blvd., Encino 91436

Cosponsored by the Theodore Payne Foundation and California Native Plant Society, L.A./Santa Monica Mountains Chapter

The Foundation is once again pleased to be part of this day-long celebration of our State's official Native Plant Week.

Activities include wildflower displays (dozens of different spring-flowering beauties gathered from members' home gardens and TPF grounds); inspiring presentations; educational displays and demonstrations; and children's activities; plus sales of books, posters, maps, t-shirts AND native plants and seed from the Theodore Payne Nursery!

Featured speakers will focus on habitat gardening:

10:00-11:30 a.m.

Hartmut Wisch, An Introduction to California Native Bees

12:00-1:30 p.m.

Mickey Long, Botany for Birders: Merging Plant and Bird Study

2:00-3:30 p.m.

Alan Pollack, Restoring Habitat, One Yard at a Time

Admission is free. Parking is ample and free; refreshments are available for purchase. More details at lacnps.org.

Please invite your family and friends – the Foundation values your presence and your support for these exciting seasonal events. Happy Spring!

Announcing Our New Executive Director, Kitty Connolly

We're pleased to announce that, following an extensive search, the Theodore Payne Foundation for Wild Flowers and Native Plants has named Kitty Connolly as its Executive Director. Kitty is an acclaimed botanical educator. She joined the Foundation staff on Jan. 6, 2014. Kitty succeeds Lynnette Kampe, who retired from her position after more than three years of exemplary service.



Before joining TPF, Kitty had been at The Huntington Library, Art Collections, and Botanical Gardens since 1999, where she established herself as a leader in botanical interpretation. She is known for her exhibition work including "Plants are up to Something," which was awarded the highest honors exhibition excellence by the American Alliance of Museums in 2007, as well as the recent "When They Were Wild: Recapturing California's Wildflower Heritage," organized in cooperation with the Foundation and Rancho Santa Ana Botanic Garden. She has written on botanical interpretation, including authoring a chapter in the first textbook on developing and operating public gardens, 2011's *Public Garden Management*.

Kitty arrives at an exciting time of growth and transition for the Foundation. The upward trajectory of the organization, complimented by the new nature education facilities – with groundbreaking scheduled for this summer – as well as the success of our nursery offerings and unparalleled education and outreach programs has inspired new goals and a vision to make TPF a "destination" for diverse audiences throughout Los Angeles, California and the nation.

The Foundation has never been positioned as well as it is today to take advantage of Kitty's vision and leadership. For more than 50 years, we have promoted and helped preserve native plants and landscapes, and our programs and nursery provide solutions for a sustainable future. With Kitty at the helm, we have the capacity to significantly extend our impact.

At the Foundation, Kitty will be responsible for 17 staff members working on a range of projects from the retail nursery, seed and bulb programs to education and outreach, that affect more than 100,000 people annually. She also oversees more than 250 volunteers who support the Foundation through their service.

"I am proud and honored to be joining an institution as distinguished as the Theodore Payne Foundation," Kitty says, "The Foundation is at a point of pivotal growth, and I look forward to building on the amazing work of Lynnette Kampe and all the staff."

Welcome, Kitty!

Cassy Aoyagi, President, Board of Directors

The Poppy Print is the membership newsletter of the *Theodore Payne Foundation for Wild Flowers and Native Plants, Inc.*, a nonprofit organization. The Foundation's mission is to promote and restore California landscapes and habitats, to propagate and make available California native plants and wildflowers and to educate and acquire knowledge about California flora and natural history. The Foundation operates a nonprofit nursery where native plants are grown and sold to the public year round. Wildflower and native plant seeds, and horticultural and botanical books are available at our Sun Valley headquarters and by mail.

Theodore Payne Foundation for Wild Flowers and Native Plants., Inc. | 10459 Tuxford Street, Sun Valley, CA 91352
theodorepayne.org | Tel: 818-768-1802 | Email: info@theodorepayne.org

Executive Director: **Kitty Connolly**
 Director of Horticulture: **Madena Asbell**
 Seed Program Manager: **Genevieve Arnold**
 Nursery Manager: **Tim Becker**
 Production Foreman: **Francisco Rosales**
 Nursery Production: **Mary Brooks, Elmer Luna, Antonio Velasquez**
 Nursery Sales Manager: **Flora Ito**
 Nursery Sales: **Edward Condit, Suzanne Robinson, Maureen Taylor**
 Director of Special Projects and Adult Education: **Lili Singer**
 Director of Outreach and K-12 Education: **Lisa Novick**
 Volunteer Coordinator: **Andrew Chaves**
 Office Assistant: **Kristen Greblo**
 Bookkeeper: **Michael York**

STAFF

Cassy Aoyagi, President
Debe Loxton, Vice President
Dawn Petersen-Amend, Treasurer
Janica Jones, Secretary
Pamela Burgess
Snowdy Dodson
Daniel Fink, M.D.
Liz Johnson
D.J. Peterson

BOARD

© 2014 The Theodore Payne Foundation

SPRING 2014 EVENTS AND CLASSES

Register on-line at theodorepayne.org or call (818) 768-1802 or in person at our Sun Valley headquarters.

Visit our website, theodorepayne.org, for complete information on classes and instructors, and details on our Three-part California Native Plant Garden Design course.

Cancellation policy: No refunds for cancellations made within seven days of the class date.

The **TPF Speakers Bureau** offers presentations for community groups, garden clubs and public agencies.

Field trips and in-classroom visits for K-12 students are also available.

Contact: Lisa Novick, lisa@theodorepayne.org.

MORE ONLINE
THEODOREPAYNE.ORG @

MARCH

POPPY DAY PLANT SALE

Saturday, March 29, 8:30 a.m.-4:30 p.m.

The region's largest and most interesting selection of native plants – with discounts to all on plants and seed – this year featuring plants that attract butterflies, especially Monarchs!

Members 15% off plants; non-members 10%; everyone 10% off seed. Not yet a member? Join at the door!

APRIL

First Thursday Bird Walk with Ken Gilliland

Thursday, April 3, 8:00-10:00 a.m.

Free – Reservations requested to 818-768-1802.

Join a passionate local birder for an easy morning ramble on the Foundation's scenic canyon land, where more than 50 different species of birds have been seen. Bring your own binoculars, hat and water. Ken is an accomplished birdwatcher and avian artist (empken.com) and former TPF webmaster. This activity repeats on the first Thursday of each month through June.

11TH ANNUAL THEODORE PAYNE NATIVE PLANT GARDEN TOUR

Saturday & Sunday, April 5 & 6, 10:00 a.m.-5:00 p.m.

Showcasing 42 beautiful and inspiring gardens in the Los Angeles region, each planted with at least 50% California natives. New this year: Contemporary art installations at 11 selected gardens!

Tickets: Members, students, groups of 10 or more, \$15/person for both days; non-members, \$20/person.

Purchase online at theodorepayne.org, by phone to 818-768-1802, or in person at our Sun Valley headquarters.

First Saturday: Volunteer Day at TPF

Saturday, April 12, 9:00 a.m.-noon

Reservations requested to volunteer@theodorepayne.org.

This month we meet on the SECOND Saturday (first Saturday falls on Garden Tour weekend). Join other volunteers as we improve and care for our gardens. We will clear, clean, plant, mulch, prune and anything else needed to spruce up the grounds and show how beautiful native plant gardens can be. Bring hat, gloves, knee pads or other tools for personal use. TPF will provide shovels, trowels, rakes, loppers, hoes and pruners, as well as refreshments.

California Native Plant Horticulture with Madena Asbell

Saturday, April 19, 8:30 a.m.-12:30 p.m.

\$40 members, \$50 non-members

The basics on gardening with California flora; why natives are valuable, about plant communities, plus planting techniques, establishment, irrigation, pruning and ongoing maintenance. Recommended for beginners; prerequisite to our Three-part California Native Plant Garden Design course. Madena is TPF's director of horticulture.

Kill Your Lawn with Steve Gerischer

Saturday, April 26, 1:30-3:30 p.m.

\$25 members, \$35 non-members

Lawns = wasted water, air and noise pollution, and toxic runoff – and you can make a difference. Learn how to remove unwanted turf and replace it with fragrant, flowering, drought-tolerant, low-maintenance native plants. Steve creates award-winning landscapes with his company, Larkspur Garden Design, and lectures on a wide variety of topics relating to gardening in this region. He also serves as president of the Southern California Horticultural Society and Pacific Horticulture Society.

THREE-PART CALIFORNIA NATIVE GARDEN DESIGN

This comprehensive course for home gardeners offers a sound foundation in design styles and processes, sustainable landscape practices, and how to model a garden after patterns in nature. PREREQUISITE: our California Native Plant Horticulture class, offered April 19, May 17 and June 21.

Three Saturdays, June 14, June 28 and July 12, 8:30 a.m.-12:30 p.m., with Steve Gerischer

OR Three Saturdays, July 26, August 9 and August 23, 8:30 a.m.-12:30 p.m., with Armstrong & Walker

OR Three Saturdays, August 16, August 30 and September 13, 8:30 a.m.-12:30 p.m., with Joshua Link

\$220 members, \$265 non-members

\$275 member couples, \$335 non-member couples

Enrollment is limited to eight projects to ensure individual attention. Complete details and instructor bios at theodorepayne.org/calendar.html.

MAY

First Thursday Bird Walk with Ken Gilliland

Thursday, May 1, 8:00-10:00 a.m.

For details, see April 3

First Saturday: Volunteer Day at TPF

Saturday, May 3, 9:00 a.m.-noon

For details, see April 12.

Basics of Native Plant Identification with Lorrae Fuentes

Saturday, May 3, 9:00 a.m.-1:00 p.m.

\$40 members, \$50 non-members

An introductory course in botany for the non-scientist and specifically for amateur plant enthusiasts. Class includes a brief but comprehensive overview of general botany topics (e.g. plant classification, plant structure and function, ecology and plant reproduction), and will focus on members of the Asteraceae, Lamiaceae, Fabaceae and "Scroph-like" families. Students will begin to master the terminology associated with botany and plant identification. Instruction is informal and

hands-on, with dissection and examination of fresh and dried plant material, and a walk on TPF grounds to observe and identify plants. If possible, bring *The Jepson Manual: Vascular Plants of California* to class; hand lenses will be provided. Lorrae is a botanical educator and native plant advocate, and producer of the Theodore Payne Wild Flower Hotline. Limit: 12.

NEW! Herbarium Workshop with Sean Lahmeyer

Two Fridays: May 2 and May 9, 9:00-10:30 a.m.
\$45 members, \$65 non-members (includes materials fee)
A two-session course for citizen scientists and budding botanists! Week One covers the history and importance of herbaria, collecting ethics, how to make a useful voucher for the scientific community and different techniques for drying and pressing plant material. Week Two includes mounting techniques for plants pressed in the previous week's class. Sean is Plant Conservation Specialist at Huntington Botanical Gardens. He is curator of the herbarium and also oversees the tissue culture program and seed bank. He is currently an adjunct instructor of biology at Pasadena City College. Limit: 12.

NEW! Many Uses of Yucca Workshop with Kat High

Saturday, May 10, 1:30-3:30 p.m.
\$20 members, \$30 non-members
Learn and experience what the mighty chaparral yucca – *Hesperoyucca (Yucca) whipplei* – has to offer us for food, cordage, medicine and more! Class includes hands-on activities and native food tasting. Kat is a Native Californian of Hupa descent. Trained by elders in Native American land management traditions, she teaches others how to adapt those principles to the modern world, and offers environmental education as a traditional path through this time of climate change.

California Native Plant Horticulture with Madena Asbell

Saturday, May 17, 8:30 a.m.-12:30 p.m.
For details, see April 19.

Kill Your Lawn with Steve Gerischer

Saturday, May 24, 1:30-3:30 p.m.
For details, see April 26.

Propagating California Native Plants with Madena Asbell and Tim Becker

Saturday, May 31, 9:00 a.m.-noon
\$45 members, \$55 non-members
Learn basic skills of vegetative propagation with TPF nursery staff! Various species of native plants will be discussed and started from cuttings or divisions in this hands-on session, and you'll leave with a flat of cuttings for your own garden! Madena is TPF's director of horticulture. Tim is our nursery manager. Limit: 8.

NEW! No Plants! Hardscape Materials and Techniques with Andreas Hessing

Saturday, May 31, 1:00-3:00 p.m.
\$25 members, \$35 non-members
Location: Scrub Jay Studios, Altadena (address provided upon registration)
How do you build the bones of a garden? This class surveys standard and alternative building techniques and materials for walls, walks, fences and seats. A tour of the instructor's garden will show many innovative examples of hardscape. Andreas is an artist and landscape designer and licensed contractor

(scrubjaystudios.com). For more than 20 years, his site-specific installations have celebrated regional biodiversity while focusing on the philosophical, political and social implications of California's indigenous flora.

JUNE

First Thursday Bird Walk with Ken Gilliland

Thursday, June 5, 8:00-10:00 a.m.
For details, see April 3.

First Saturday: Volunteer Day at TPF

Saturday, June 7, 9:00 a.m.-noon
For details, see April 12.

The Wacky World of Pollination: Native Plants & the Critters Who Love Them with Bob Allen

Saturday, June 7, 1:00-3:30 p.m.
\$25 members, \$35 non-members
Pollinators play a critical role in the reproduction of 90% of all flowering plants, including much of our food supply – and native plant gardens attract more pollinators than landscapes filled with exotic flora. This fascinating program includes fabulous photos, fun facts and hands-on examples! Gardeners of all ages are welcome! Bob is an entomologist, botanist, photographer and author. In 2006, he was recognized as Orange County's Environmental Educator of the Year. He is co-author (with Fred Roberts) of *A Field Guide to Wildflowers of Orange County and the Santa Ana Mountains*.

Hypertufa Container Workshop with Steve Gerischer

Friday, June 13, 10:00 a.m.-noon
\$25 members, \$35 non-members
A super-fun, hands-on messy activity for grown-ups! Using cement, perlite and coir, each attendee will make a relatively lightweight container that resembles a time-weathered stone trough. Wear old clothes and shoes. All materials provided. For instructor bio, see April 26.

Perfect Partners: Gardening with Natives and All Sorts of Edibles with Lili Singer

Saturday, June 14, 1:30-3:30 p.m.
\$25 members, \$35 non-members
Gardening with natives and growing our own food are two wonderful activities that help us connect with nature and use our land in a positive ways. This class discusses how best to combine natives and edibles in the home garden, why this partnership is so rewarding for both the gardener/chef and wildlife, and which plants make the best companions. Lili is an award-winning horticulturist, educator and garden writer, and TPF's director of special projects and adult education.

NEW! Insects in the Field and Garden with Hartmut Wisch

Saturday, June 21, 9:00 -11:00 a.m.
\$20 members, \$30 non-members
This fabulously illustrated lecture reveals the diversity and beauty of insects that may be encountered in our local gardens and nearby wildlands – including members of Diptera, Hymenoptera, Hemiptera, Lepidoptera and other major orders. Hartmut discovered a love for macro photography and a fascination with our insect fauna after working for 35 years as a naturalist-guide through western North America. He is a contributing editor at bugguide.net (Iowa State U.).

California Native Plant Horticulture with Lili Singer

Saturday, June 21, 11:30 a.m.-3:30 p.m.
For details, see April 19. Lili is TPF's director of special projects and adult education.

a Gathering of Friends

The early autumn weather was perfect for our second annual Gathering of Friends, held Saturday, November 2, 2013 at the gorgeous Pasadena home and garden of Tina and Mark Graf. As musicians played an eclectic mix, several dozen TPF supporters, board and staff enjoyed the afternoon's signature cocktail, fabulous food, and great company and conversation.



Former Executive Director Lynnette Kampe thanked her staff and made an impassioned call for pledges.

This festive celebration for Foundation friends included a brief welcome by TPF President Cassy Aoyagi, who provided a quick year in review and recognized board members and staff. Executive Director Lynnette Kampe encouraged guests to attend one of our Behind-the-Scenes tours, and then passed the mike for reports and highlights for various Foundation programs.

Director of Outreach and K-12 Education Lisa Novick detailed and emphasized the positive

impact of TPF outreach to schools, schoolchildren and the community at large. Director of Special Projects and Adult Education Lili Singer described our unique adult classes, our partnership in artist Fritz Haeg's Wildflowering L.A. project, and the new "satellite" TPF nursery at the L.A. Arboretum in Arcadia. Director of Horticulture Madena Asbell conveyed plans for the future, including expanded nursery, seed and bulb programs. Tour Coordinator Margaret Oakley talked about the 11th Annual Theodore Payne Native Plant Garden Tour, to be held April 5-6, 2014. Lastly, Board and Arts Council Member Pamela Burgess noted the diverse activities and goals of the TPF Arts program.

Next, Board Member Dan Fink, voiced heartfelt appreciation for Lynnette Kampe, who would be retiring January 2014. He acknowledged her three years' of dedication and accomplishments – with special thanks for shepherding and managing the new Nature Education Facilities project. Holding back tears, Lynnette thanked and credited her staff for TPF's growth and current success. She then shared an update on the new facilities and (drum roll) honored Anthony LaFetra, longtime Foundation patron and recent donor of \$500,000 toward construction of the new classrooms and ongoing program support.

Presentations ended with a call for donations to be hung on the smooth red boughs of a magnificent manzanita "Gift Tree." A matching challenge of \$10,000 was presented by Susan and Dan Gottlieb – and our generous friends responded eagerly with more than \$20,000 in pledges to support TPF's mission and programs! Included in this total was \$5000 from Ed and Susan Klenner, who became charter members of the TPF Founder's Circle.

The gathering ended after sunset with luscious desserts and gifts to our guests. We thank all attendees for their enthusiastic support!

OUR 2013 GATHERING OF FRIENDS SIGNATURE COCKTAIL

Poppy-Berry Sparkle

.5 oz pear nectar
.5 oz Grand Poppy Liqueur
Two fresh *Salvia apiana* (white sage) leaves
for mixing and garnish
4 oz. champagne
4-6 dried cranberries

Soak dried cranberries in hot water. When water cools to room temperature, strain and keep berries in refrigerator until cocktail time.

Over ice in a shaker, shake pear nectar, poppy liqueur and one sage leaf. Strain into a glass, add champagne, and float rehydrated cranberries and one sage leaf on top. Serves one.

Thanks to the following businesses and individuals for their discounts, donations and time.

- **Tina and Mark Graf:** Use of their delightful, enchanting home and garden for our celebration
- **Greenbar Collective:** Liquor for our signature cocktail
- **Dennis and Rebecca Pacas:** A varied playlist of beautiful string music
- **Brian Leach:** Creation of a unique home-brewed pale ale
- **Terra Design/Wynne Wilson:** Endless hours of planning to make every detail perfect in the garden
- **Orly Olivier:** Donation of professional photography services for the day
- **Tony LaFetra:** For giving us an extra-special reason to celebrate our achievements and vision for the future
- **The entire party planning committee:** For working so hard to make this an enjoyable, educational and delicious afternoon for our very dear supporters and friends



All photos © Orly Olivier

TPF supporters Curt and Deb Hill reviewed plans for TPF's new Nature Education Facilities

By Pamela Burgess, Arts Council Member

Jessica Rath – Buzz Pollinate: Slits, Pores, and Valves March 29 through June 14, 2014

Opening Reception: Saturday, March 29, 2:00-4:30 p.m. with artist talk at 3:00 p.m.

Artist Jessica Rath is fascinated with buzz pollination, a co-adaptation between certain bees and specific angiosperms that require sonication, or vibratory resonance, to release pollen from their anthers. Over evolutionary time, the shape of these anthers has become a closed tube-like vessel with a limited opening pore or slit. These incredible shapes and the vibrations that open them are the subject of Jessica's show in the Theodore Payne Gallery.

Consulting with bee specialist Dr. Anne Leonard from University of Nevada, Reno, and buzz pollination specialist Dr. Stephen Buchmann from University of Arizona, Tucson, Jessica has immersed herself in the scientific resonances around this wonderful phenomenon.

The photograph of manzanita anthers at right, shot by Dr. Stephen Buchmann, has been her inspiration for a series of oversized anther sculptures, as well as watercolors in the show.

The exhibition will also include sound work alluding to buzz pollination tonal values and created in collaboration with experimental music composer Robert Hoehn. Some 5% to 6% of all the world's angiosperms require buzz pollination, including commercial greenhouse tomatoes and some manzanitas, which are now in bloom at TPF! Learn more about the artist at jessicarath.com.

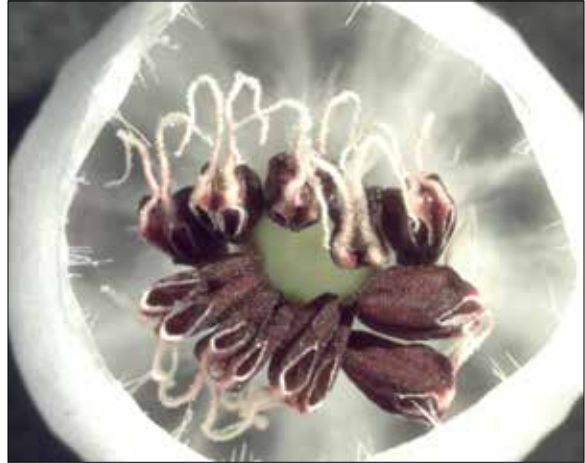


Photo © Dr. Stephen Buchmann,
Department of Entomology,
University of Arizona, Tucson

FROM THE ARTS COUNCIL

2014 TPF Artist-in-Residence Mara Lonner

The Foundation is delighted to announce Mara Lonner as our fifth Artist-in-Residence. Mara (a TPF member) received her BFA and MFA from the California Institute of the Arts. Employing various media and genres, her art blurs the conventional distinction between organic and geometric worlds. Recent work interweaves ruins, architectural ornaments and botanical forms, and focuses on the beautiful tenacity of nature.



Mara Lonner
But We Have So Much In Common, 2011
Limited edition archival inkjet print, ed: 20, artists proof: 5
16 x 20 inches

Mara is a lecturer at UC Irvine and has taught at CalArts and Long Beach City College. She received a California Arts Council Grant and was twice awarded a Durfee Foundation ARC Grant. In addition to her residency at TPF, Mara was recently awarded a residency at the Helene Wurlitzer Foundation in Taos.

Exhibitions include: Jancar Gallery, Los Angeles; Cue Art Foundation, New York; LAXART, Culver City; and large-scale wall works for the Haaga Gallery, Descanso Gardens. She is currently working on two permanent public art projects. The first, commissioned by the Los Angeles County Arts Commission, is for San Angelo Park's community center in La Puente. The second, in collaboration with Kim Schoenstadt and for the Los Angeles Department of Cultural Affairs, is for a new Intergenerational Center in the San Fernando Valley. To learn more about Mara and her art, visit maralonner.com.

A new body of work inspired by native flora and the TPF landscape will be produced by Mara during her residency and exhibited this fall in the Theodore Payne Gallery.

Please join the Foundation in welcoming this talented contemporary artist as our 2014 Artist-in-Residence! - PB

What to Do in the Garden Now

spring

PLANT Planting slows as days lengthen and temperatures rise. Still, many natives can be added to the garden during the warm months. Consider desert species (these receive summer monsoons in the wild; try desert willow, apricot mallow); riparian plants (these have constant or nearly constant access to water; try dogwood, western sycamore, mugwort); shade lovers (coral bells, evergreen currant, rushes, ferns, etc.); and many grasses and grass-like plants. Coastal gardeners have plenty of leeway, as the soil stays cooler there than it does inland.

Though most manzanitas and ceanothus are best planted in autumn, there are exceptions, including *Arctostaphylos* 'Howard McMinn' and *A.* 'Sunset' and *Ceanothus* 'Ray Hartman'. Consult our expert nursery staff for more recommendations.



Photo © Creative Commons/Curtis Clark

Encelia californica (California bush sunflower)

SOW Alternates to conventional turfgrass, such as low-care *Achillea millefolium* (common yarrow), *Festuca rubra* 'Molate' (Molate creeping red fescue) or *Bouteloua gracilis* (blue grama grass; very drought tolerant) – all are easy to grow from seed. As seed germinates and seedlings develop, keep the soil moist but not soggy.

WATER Following yet another dry winter, established and mature native plants need occasional slow, deep irrigation to keep them healthy and pest resistant. In most situations, a thorough soak every two to three weeks should suffice.

New transplants require more frequent attention and regular irrigation for one or more years, until they're established. Check soil moisture often and water only when the top few inches are dry. Always soak both the original rootball and surrounding soil thoroughly and deeply.

Water container plants as needed (more frequently during warm weather) and always thoroughly (until water drains from the holes). Empty the excess water from saucers, if used. A top dressing of decorative pebbles, available in TPF's Potting Station, helps conserve moisture and looks pretty, too.

MULCH A 3"-4" layer of mulch – either organic matter (leaves, bark and wood chips and fibers; freshly chipped materials are fine) or decorative rock or gravel – helps retain soil moisture; moderates soil temperatures (especially important during the warm months); suppresses weeds; and beautifies the garden. As organic mulches decompose, they also add nutrients to the soil. No mulch should touch the crowns, trunks or stems of plants.

To invite and support ground-nesting native bees and wasps (both highly beneficial), leave several sunny areas mulch free.

PEST MANAGEMENT Spring growth attracts aphids! Dislodge these tiny insects with a strong stream of water; those you miss will be found and eaten by beneficial insects.

Hoe or hand-pull spring annual weeds, including crabgrass, veldt grass (*Erharta*) and lamb's quarters before they flower and set and distribute seed (you'll have fewer weeds next year). Dig deeply to remove dandelion, filaree and other perennial invaders with extensive root systems.

PRUNE Pinch or tip-prune young shrubs to encourage dense growth and increase flower production. Good candidates include *Adenostema* (chamise), *Eriogonum giganteum* (St. Catherine's lace) and *Encelia californica* (California bush sunflower). Best times are early spring (when new growth is vigorous but before flower buds form) or after spring flowering.

Remove suckers from the bases of these trees: *Lyonothamnus floribundus* ssp. *aspleniifolius* (Santa Cruz Island ironwood), *Umbellularia californica* (California bay) and *Sambucus nigra* ssp. *caerulea* (blue elderberry).

Leave spent inflorescences of spring-blooming wildflowers, buckwheats and sages – you can harvest some ripe seed or leave it all for hungry birds. A tip: When removing old flower spikes from *Salvia spathacea* (hummingbird sage), cut entire stems down to the ground.

Before you visit, check our current nursery inventory, updated weekly at theodorepayne.org.

SEED ROOM CHAFF

By Genevieve Arnold, Seed Program Manager

Thank you to the following seed donors. Donations of seed from home gardens are always appreciated. Visit theodorepayne.org for Seed Donation Guidelines.

Genevieve Arnold: *Datura wrightii*, *Helianthus annuus* **Madena Asbell:** *Calliandra californica* **Edna Benesch:** *Quercus engelmannii* **Sima Bernstein:** *Malacothamnus fasciculatus* **Colleen Boye:** *Achillea millefolium* **Andrew Chavez:** *Eriogonum parvifolium* **Dave Daniels:** *Calochortus plummerae* **Snowy Dodson:** *Eriogonum cinereum* **Scott Doudrick:** *Aesculus californica* **Ken and Rhonda Gilliland:** *Chamaebatiaria millefolium*, *Deinandra minthornii*, *Lavatera assurgentiflora*, *Prunus* sp. **George Herrera:** *Quercus engelmannii* **Andreas Hessing:** *Aesculus californica*, *Cercis occidentalis* **Marilynn Hildebrandt:** *Cercis occidentalis*, *Lavatera assurgentiflora*, *Prunus ilicifolia* ssp. *ilicifolia* **Lynnette Kampe:** *Juglans californica*, *Prunus ilicifolia* ssp. *lyonii*, *Sambucus nigra* ssp. *caerulea* **Roger Klemm:** *Aesculus californica*, *Dudleya pulverulenta*, *Eschscholzia californica*, *Heuchera maxima*, *Quercus chrysolepis*, *Q. engelmannii*, *Salvia apiana*, *S. columbariae*, *S. spathacea*, *Sisyrinchium bellum*, *Thalictrum polycarpum*, *Trichostema lanatum* **Jeanne Le Fevre:** *Cercocarpus alnifolius* **Louise Olson:** *Baileya multiradiata*, *Cassia purpusii*, *Dendromecon harfordii*, *Eriogonum grande* var. *rubescens*, *Erysimum menziesii*, *Eschscholzia maritima*, *Hibiscus lasiocarpus*, *Justicia californica*, *Linum lewisii*, *Salvia clevelandii*, *Trichostema lanatum* **Katherine Pakradouni:** *Eriogonum grande* var. *rubescens* **Craig and Tracey Peterson:** *Calochortus catalinae*, *C. clavatus*, *C. obispoensis*, *C. simulans*, *C. vestae* **Douglas Pollack:** *Trichostema lanatum* **Rosemont Preserve:** *Eriogonum fasciculatum*, *Salvia apiana* **Liz Schiller:** *Clarkia unguiculata* **Pyre:** *Aristolochia californica* **Kathy Tardy:** *Eschscholzia californica* **Layla Valenzuela:** *Vitis girdiana* **Pam Wagner:** *Iris douglasiana* **Lew Weiss:** *Plantago subnuda* **John Wickham:** *Allium falcifolium*, *Dudleya albiflora*, *Eriogonum kennedyi*, *Fritillaria affinis*, *Munzothamnus blairii*, *Quercus agrifolia*, *Triteleia lugens*

Thanks also to the following seed storage jar and seed room towel donors: Heather Blair, Alvin Crown, Michael Gunson, Robert Hughes, Roger Klemm, Louise Olson, Susan Steadman, Dorothy Woodward

thank you
The Foundation

appreciates and values the following donations:

Antelope Valley Resources Conservation District Nursery: plants, seed and two vintage USDA soil surveys, one for Lancaster (1926) and another for Pasadena (1917) **Genevieve Arnold:** cuttings of *Malacothamnus clementinus* **Jack and Ann Fenn:** desktop computer **Sylvia Folland:** sturdy bags for store purchases **Gloria Gwynne:** books **Katie Schultz:** cuttings of *Artemisia palmeri* **Sprouts Farmers Market, La Cañada Flintridge:** Paper bags for the garden tour

recycling at TPF
Members pitch in:

In the last year, visitors to our nursery have dropped off pots for our production team to recycle.

Approximately 20,000 1-gallon and around 5000 4-inch pots were kept out of landfills and saved money for the Foundation.

Keep bringing your used nursery containers to TPF – leave them in the wooden bin in our parking lot, and we'll put them to good use!

THEODORE PAYNE FOUNDATION

**Wild Flower
Online
Hotline**

Now in its 32nd year!
March through May
at theodorepayne.org.

What's blooming
where?



CELEBRATING OUR *volunteers*

This Fall and Winter, we welcomed 28 new volunteers who jumped right in to help at our seasonal events. Two major Eagle Scout projects were completed, and regular volunteers worked tirelessly to keep the Foundation looking nice and assist customers at the Fall Plant Sale. This year's sale was the best yet, grossing more than any previous year! Both new and regular volunteers are invaluable, supporting the Foundation's mission and programs, and helping our operation run smoothly.

To become a member of the TPF family of volunteers, contact Andrew Chaves at andrew@theodorepayne.org. Opportunities are varied—from weeding (so important!) to data entry to outreach events—and your volunteer hours will be rewarded with free classes at the Foundation!

Photo: Andrew Chaves



Eagle Scout Alec Stitick with one of the storage boxes he built at TPF.

ARCHIVES, LIBRARY AND BULB COLLECTION John Wickham

BRIDGE BUILDING Eagle Scout Eric Patton, scouts and family members of La Crescenta Troop 390

BULB COLLECTION Joe Grant

2013 FALL PLANT SALE Cassy Aoyagi, Anna Armstrong, Laurice Becker, Sima Bernstein, Orchid Black, Mary Brooks, Kristen Brown, Paula Brown, Richard Carlos, Mardi Caruso, Lin Cher, Scott Cher, Julie Deamer, Paula Delfosse, Snowdy Dodson, Bonnie Edwards, Dee Farnsworth, Daniel Fink, Vivien Fortunaso, Joe Grant, Joan Harrison, Marilyn Hildebrandt, Deb Hill, Curt Hill, Jeff Jamison, Ulrika Johansson, Liz Johnson, Janica Jones, Jon Joyce, Debe Loxton, Kathleen Linowski, Sandy Masuo, Elizabeth Miles, Anaise "Nisi" Nugent, Dan Nugent, Tricia O'Connell, Juliette Ohan, Louise Olson, Kathleen Orth, Pyre, Phyllis Roberts, Jan Siechert, Steve Singer, Margaret Steele, Khatrina Suarez, Kathy Tardy, Ted Tassop, Teresa Treuenfels, Mark Uhlmann, Lilyan Vosghanian, Richard Walker, Wendy Weihs, Mitzi Zack-Walters, Sabina Zenkich

FIRST SATURDAYS Scarlet Ambrose, Kristen Brown, Paula Brown, Lin Cher, Suzie Coane, Brian Cowden, Erin Dalleska, Nathan Dalleska, Alan Duke, Dee Farnsworth, Martha Gallegos, Dennis Gaudenti, Mykael Goff, Joe Grant, Kathleen Grantham, Natsuko Hagiwara, Jeff Jamison, Jon Joyce, Paul Liu, Frances McAdam, Elizabeth Miles, Daniela Morin, Aya Muto, Jade Nguyen, Petra Nichols, Tricia O'Connell, Juliette Ohan, Louise Olson, Chuck Petithomme, Miss Pyre, Dora Quin, Allan Reyes, Anita Sheridan, Duncan Sinclair, Steve Singer, Marlene Songin, Michael Sovich, Margaret Steele, Khatrina Suarez, Kathy Tardy, Richard Tom, Lilyan Vosghanian, Tim Wilson, Xuan Zhao

GATHERING OF FRIENDS Steve Singer, Margaret Steele

GROUNDS Mykael Goff, Lynnette Kampe, Jade Nguyen, Mike Sovich, Margaret Steele, Allison Tokunaga, Steffanie Walk, Tim Wilson, and Students of Crespi High School, Encino, and Village Christian School, Sun Valley

HOLLYWOOD FARMERS' MARKET Carol Aronson, Laurice Becker, Richard Carlos, Mardi Caruso, Justin Chao, Marie Dale, Carlos Flores, Steve Singer

K-12 FIELD TRIP ASSISTANCE Carol Aronson, Joan Harrison, Jade Nguyen

L.A. ARBORETUM PLANT SALES Frances McAdam, Julie McIntosh, Kathleen Orth, Duncan Sinclair

NEW VOLUNTEER ORIENTATION Carol Aronson, Brandi Anderson, Alan Duke, Dennis Gaudenti, Mykael Goff, Kelle Green, Norma Hogan, Fanny Kilian, Cynthia Martin, Jeannie Mason, Joanne Millius, Allan Roman Reyes, Carol Sagusti, Luiz Sampaio, Allison Tokunaga, Steffanie Walk, Gail Woodward

NURSERY BENCH PROJECT Joe Grant, Fredrick Maupin, Charlie Rossow

OFFICE Carol Aronson, Laurice Becker, Richard Carlos, Mardi Caruso, Lin Cher, Katherine Hashimoto, Deb Hill, Kathy Linowski, Joanne Millius, Luiz Sampaio, Margaret Steele

OUTREACH Alan Duke, Sima Bernstein, Joe Grant, Kathleen Grantham, Joan Harrison, Jeff Jamison, Jon Joyce, Lynnette Kampe, Kay McCarthy, Jade Nguyen, Kathleen Orth, Chuck Petithomme

PROPAGATION Roxanne Correa, Nancy Edwards, Andrew Peck, Michael Rubin

SALES YARD Carol Aronson, Mary Brooks, Alan Duke, Joe Grant, Jeff Jamison, Jon Joyce, Louise Olson, Kathleen Orth, Miss Pyre, Anita Sheridan, Steven Singer, Mike Sovich, Margaret Steele, Tim Wilson

SEED ROOM Sima Bernstein, Mardi Caruso, Petra Nichols, Kathy Tardy

SEPT 21ST NEW VOLUNTEER ORIENTATION Kristen Brown, Paula Brown, Suzie Coane, Petra Nichols, Juliette Ohan, Khatrina Suarez, Kathy Tardy, Lilyan Vosghanian

STORAGE BOX CONSTRUCTION PROJECT Eagle Scout Alec Stitick, scouts and family members of La Cañada Troop 501

THEODORE PAYNE ARTS COUNCIL Miyoshi Barosh, Pamela Burgess, Andrew Chaves, Joan Harrison, Michael Lewis Miller, Ellen Steel, Kristina Newhouse

WILDFLOWERING L.A. Laurice Becker, Sima Bernstein, Richard Carlos, Steve Gerischer, Steve Singer

- A. C.

VOLUNTEER PROFILE

Jeff Jamison

By Andrew Chaves, Volunteer Coordinator

Have you always been interested in gardening? I enjoy hiking and backpacking, and I've always loved nature and the outdoors. Then, when my wife and I got our first house in 1989, we got our first taste of bringing nature home through landscaping.

What sparked your interest in California native plants? The Theodore Payne Garden Tour. We went on a whim several years ago and couldn't believe the variety. Then it took several years of acclimation before we said: "Let's do this."

Do you have a favorite California Native Plant? Salvia 'Vicki Romo'. It's like a small Salvia apiana (white sage).

What do you find challenging about gardening with natives? Finding patience while they establish. A watched pot never boils.

How were you introduced to the Foundation? Through the garden tour. When we finally visited the Foundation grounds in Sun Valley, we were delighted by the beauty and the aromas and the helpful staff.

Which volunteer activities do you look forward to? First Saturdays (work detail on the first Saturday of the month) and the Fall Plant Sale.

What keeps you coming back? The whole gestalt...the grounding experience of being outdoors, working side-by-side with wonderful people, serving our community.

What would you tell someone who is thinking about volunteering? Try it and if it's right for you, you'll know.

Tell me about some of the people you've met while volunteering at TPF. Some of the coolest people I know...smart people from all walks of life.

What do you do when you aren't volunteering? I work in sales and administration for an entertainment company. I teach at a local university. My kids keep me busy, and I like to see my wife once in a while.

What might someone be surprised to know about you? I used to announce the water ski show at Sea World.

Are there any other thoughts you'd like to share? I am thankful for TPF, especially for their outreach to the schools.



Photo © Claire Jamison

**Theodore Payne Foundation
for Wild Flowers and Native Plants, Inc.**

10459 Tuxford Street
Sun Valley, California 91352-2126

818-768-1802
info@theodorepayne.org
theodorepayne.org

Return Service Requested

Nonprofit Org.
U. S. Postage PAID
North Hollywood, CA
Permit No. 234



plants OF THE MONTH

Each month we feature a different species or cultivar and offer it at a 20% discount to members.

Photo © Creative Commons/
Denis Prévôt



APRIL *Berberis aquifolium* var. *repens* – Creeping Barberry (Berberidaceae)

An excellent ground cover for dry shade, including under trees. Evergreen plants spread slowly to 2 1/2' high and 3'-5' wide with wonderful purplish fall color, bright yellow spring flowers and beautiful blue berries that attract songbirds and quail. Shade to part sun; prefers good drainage but will tolerate clay; drought tolerant to moderate irrigation; hardy to 15°F.

Photo ©
Penn State University



MAY *Juncus tenuis* 'Blue Dart' – Blue Dart Slender Rush (Juncaceae)

This eye-catching, evergreen grass-like plant sports upright blue-green foliage to 2' high and spreading on rhizomes, and interesting brown summer flowers. Use around bird baths and water features; great container plant. Full sun to part shade; tolerates heavy soil; regular to high water; hardy to 15°F.

Photo © Creative Commons/
Luigi Rignanese Iki



JUNE *Ceanothus thyrsiflorus* var. *thyrsiflorus* – Blueblossom (Rhamnaceae)

From Theodore Payne's 1941 catalog: "A large dense growing shrub 8 to 12 feet high with dark green foliage. The flowers are bright blue to deep blue, produced in great profusion from March to May. This was the first of the California lilacs to be brought under cultivation and is one of the most valuable for general purposes. Very attractive as single specimens, in groups or for planting against a wall. Very easy to grow and will stand ordinary garden culture." Prefers full sun on the coast, part shade inland; accepts most soils; drought tolerant to occasional irrigation; frost tender.

